



MAC 400 FLOW METERS – TECHNICAL DATA

MAC 415

Approved measuring range: 1-8 cl
Approximate number of pulses: approx 25 pulses/cl
Nozzle size: 1,5 mm
Pressure range: <10 bar
Length of connection cable: 1,5 m
Standard tube fittings: in 6,3 mm / out 6,3 mm (stainless steel)
Standard type of connector: Phoenix MCVW 1,5/3-ST
Weight: approx. 130 gr

MAC 425

Approved measuring range: 2-8 cl
Approximate number of pulses: approx 15 pulses/cl
Nozzle size: 2,5 mm
Pressure range: <10 bar
Length of connection cable: 1,5 m
Standard tube fittings: in 6,3 mm / out 6,3 mm (stainless steel)
Standard type of connector: Phoenix MCVW 1,5/3-ST
Weight: approx. 130 gr

MAC 435

Approved measuring range for beer and cider: 0,2-1 L
Approved measuring range for wine: 8-100 cl
Nozzle size: 3,5 mm
Approximate number of pulses: approx 970 pulses/ L
Pressure range: <10 bar
Length of connection cable: 1,5 m
Standard tube fittings: in 10 mm / out 5,5 mm (stainless steel)
Standard type of connector: Phoenix MCVW 1,5/3-ST
Weight: approx. 130 gr

MAC 450

Approved measuring range: 0,2-1 L
Approximate number of pulses: approx 590 pulses/ L
Nozzle size: 5,0 mm
Pressure range: <10 bar
Length of connection cable: 1,5 m
Standard tube fittings: in 10 mm / out 10 mm (stainless steel)
Standard type of connector: Phoenix MCVW 1,5/3-ST
Weight: approx. 130 gr

Electrical data:

Supply Voltage: 4,5-28 VDC
Rated Sinking Current: max 20 mA
Consumption: 12 mA
Output type: Open Collector NPN

Casing:

Crastin®

Turbine:

PVDF

Magnets:

The magnets are welded into the turbine and do not come in contact with the measured fluid.

Connection cable:

PVC-data cable

3 x 0,25 mm²

Standard length: 1,5 m, other cable lengths upon special request

Pressure range:

max 10 bar

Weight:

approx. 130 gr (MAC 435 standard)

Measuring accuracy:

+ / - 1 % (INSPECTA OY #164872/05)



SK-approval:

SK 384-001



Tube fittings:

5,5 mm tube fittings

6,3 mm tube fittings

8 mm tube fittings

10 mm tube fittings

16 mm tube fittings

3/16" stem John Guest

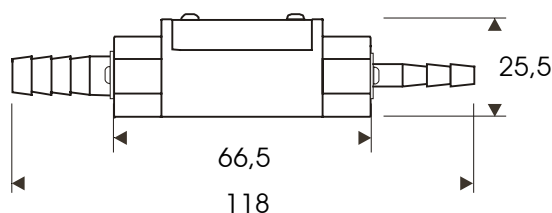
5/16" stem John Guest

3/8" stem John Guest

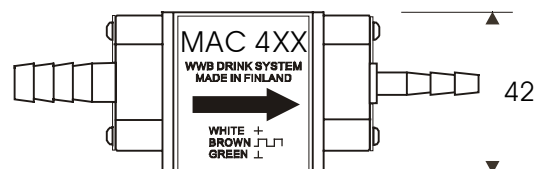
(the John Guest stems can be used with John Guest connectors).

Measures:

DIMENSIONS



Other connectors and tube fittings available on request.



Data subject to change without prior notice.

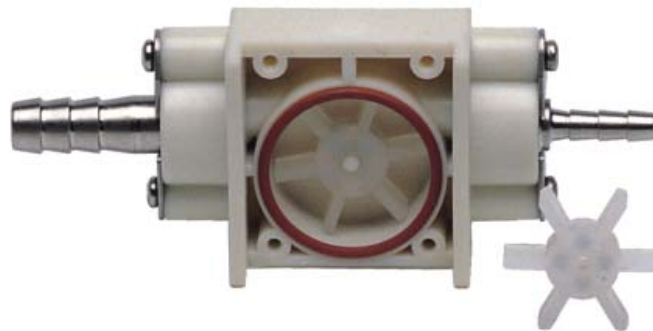


Pictures:

MAC 435 (complete with cable)



MAC 435 (inside view)



Manufacturer:

WWB Drink System Oy
Sepänkyläntie 212
65610 MUSTASAARI, FINLAND
Tel: +358-6-3223 074
Fax: +358-6-3223 076
www.wwbdrinksystem.fi
info@wwbdrinksystem.fi