

Description:

BCS-23 is a dispenser that satisfies the requirements for portioning and volume measuring today and in the future. The small size, splash protected connections and easy-to-use functions are some of the many features. The electronic identification keys increase safety and activate different functions depending on user access. BCS-23 controls three different lines. Every line can be programmed separately for portioning or free flow measuring. In addition, sales results can be programmed in order to count up sales of the same product from different lines. One-touch pressing of the buttons activates most of the functions used. The BCS-23 dispenser can also be used to portion cider or wine.

Technical data:

- Controls three beer lines
- Two programmable measures
- Daily and periodically sales results
- Three alarm lines
- Activated by electronic keys or password
- option for up to 20 waiter keys (#1-20)
- Possible to dispense Long Drinks (soft drink with liquor added)
- Power reduction on valves (Sirai)
- Valve protection
- System numbered keys.
- Dimensions: (W,H,D) 220 mm x 48 mm x 40 mm
- Supply voltage: 24V AC 60 VA

Connections:

24V AC	Supply voltage 24V AC 60 VA
V1 V2 V3	Valve connection for line 1,2 and 3
F1 F2 F3	Turbine connection for line 1,2 and 3
E1 E2 E3	FOB-connection for line 1,2 and 3

Upgrading software:

Software versions that have the same first number are compatible and upgradable. For example Rev 1.0 can be upgraded to Rev 1.1.

Manufacturer:

WWB DRINK SYSTEM OY Phone: +358-6-322 3074
Sepänkyläntie 212 Fax: +358-6-322 3076
65610 MUSTASAARI info@wwbdrinksystem.fi
FINLAND www.wwbdrinksystem.fi

20.04.2004

BCS-23 SERVICE MANUAL REV 3.3 E



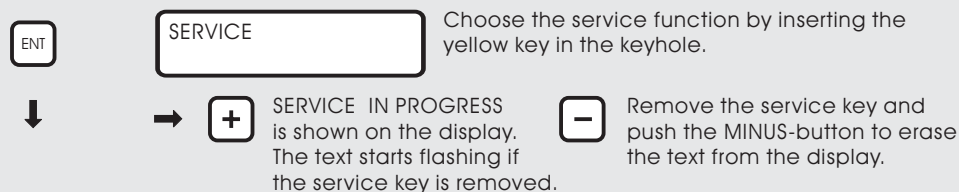
WWB *Drink* system



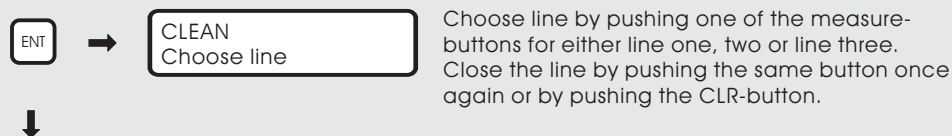
Serial number and software version:



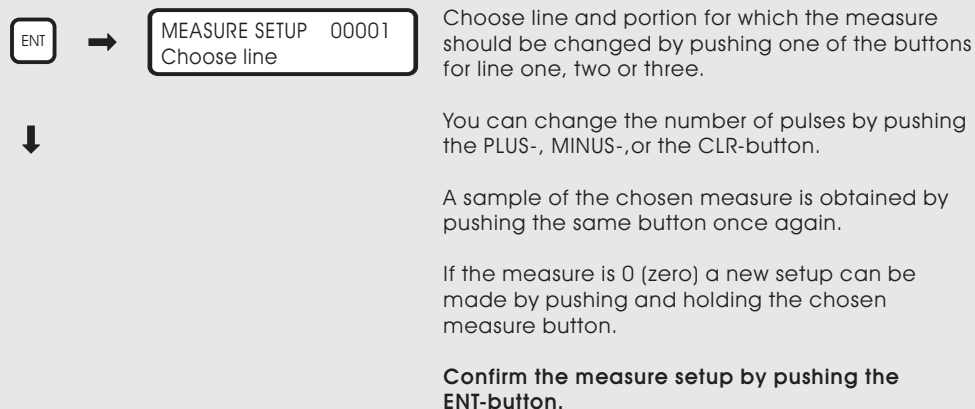
Service:



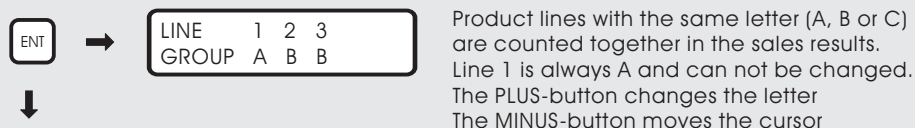
Cleaning / rinsing function:



Measure setup:

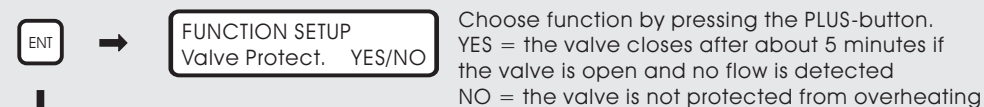


Programming of sales results:

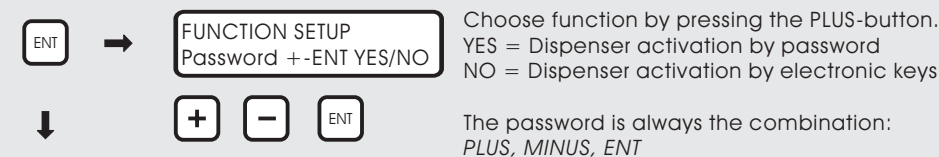


NOTE ! Some of the menus might be hidden depending on function setup

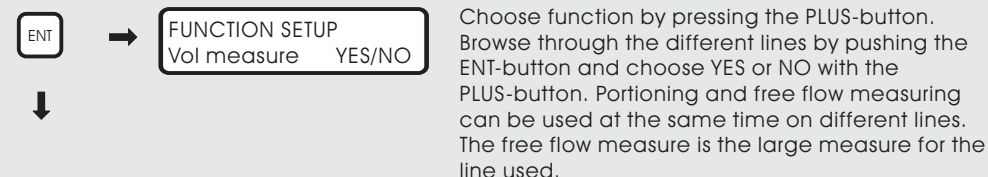
Valve protection:



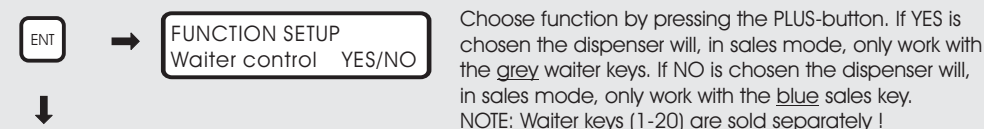
Password:



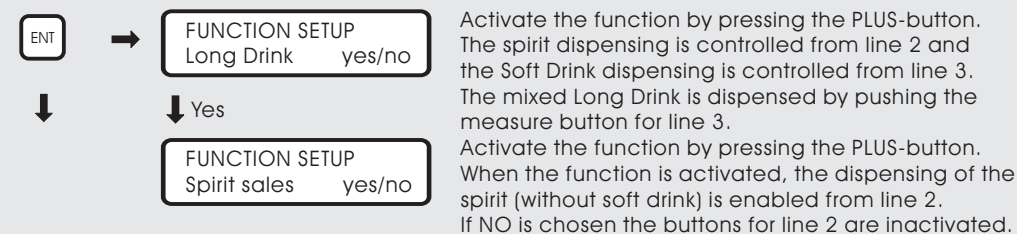
Free flow measuring sales:



Waiter control sales:



Long Drink:



System number:

